



James R. McDonough  
Secretary

# FLORIDA DEPARTMENT OF CORRECTIONS

## INMATE ESCAPES

**Fiscal Year 2005-2006**



- Fiscal Year 2005-2006
  - Attempts
  - Escapes
  - Recaptures
- Short-term trends in Inmate Escapes
- Long-term trends in Inmate Escapes for Fiscal Years 1989-90 to 2005-06

Prepared by:  
**Florida Department of Corrections**  
Bureau of Research and Data Analysis  
Inmate Information and Analysis Section  
August 2006

# Inmate Escape Report

## (Fiscal Year 2005-06)

This report provides information for the Fiscal Year 2005-06 (July 2005 - June 2006) in reference to attempted escapes, escapes and recaptures from Florida's correctional facilities. This report summarizes the following:

- \* Attempted escapes
- \* Escapes by level, facility type, and facility type by region
- \* Recaptures and recaptures within quarter, by time to recapture, and time to recapture by facility type
- \* Escape rates and rates by region, and facility type by region
- \* Escapes by facility type, by month
- \* Escape rates by region, by quarter

For purposes of this report attempted escape and escape are defined as follows:

Attempted escape: Inmate is apprehended before completion of the escape act.

Escape: Unauthorized absence from the designated facility boundary or absence from any official assignment outside this boundary.

An escape will be further defined as one of the following levels:

Level I: Escape from non-secure environment, such as a community correctional center or an outside work squad, in which no Level III behaviors are exhibited.

Level II: Escape from a secure perimeter in which no Level III behaviors are exhibited.

Level III: Escape that involves hostages, weapons/tools, outside assistance, or violence during or after the escape.

An escape rate is defined as the number of escapes/(total population on the last day of the month for each month in the quarter/3)\* 1,000.

A perimeter escape is defined as one initiated from inside the perimeter of a correctional facility other than a community release facility.

## Summary:

The number of escapes increased from 118 in FY 2004-05 to 122 in FY 2005-06. All but two of the FY 2005-06 escapes were from work release/contract centers (98.4%). Except for one, all were the least serious type Level 1 escapes (99.2%). There was one escape from a correctional institution which was a walk-a-way from a work squad and one escape from a Work Camp/Road Prison. No escapes breached the secure perimeter of a correctional facility.

Of the 122 escapes, 112 (91.8%) were recaptured by July 1, 2006. Of the 112 recaptures, 98 (87.5%) were recaptured within the quarter in which the escape occurred and 61 (62.2%) were recaptured within 24 hours of the escape.

The overall escape rate declined slightly from 1.42 in FY 2004-05 to 1.41 in FY 2005-06. The escape rate for correctional institutions declined from 0.11 in FY 2004-05 to 0.01 in FY 2005-06.

There were seven attempted and foiled escapes from Florida correctional facilities during FY 2005-06 which was the same as FY 2004-05.

## Escapes (July 2005 - June 2006)

Escapes*	1st Quarter (Jul-Sep 2005)		2nd Quarter (Oct-Dec 2005)		3rd Quarter (Jan-Mar 2006)		4th Quarter (Apr-Jun 2006)		Fiscal Year 2005/2006	
Escapes	24		27		29		42		122	
Perimeter Escapes	0		0		0		0		0	
<b>Level</b>										
Level I	24	100.0%	27	100.0%	29	100.0%	41	97.6%	121	99.2%
Level II	0	0.0%	0	0.0%	0	0.0%	0	0.0%	0	0.0%
Level III	0	0.0%	0	0.0%	0	0.0%	1	2.4%	1	0.8%
Not Rated	0	0.0%	0	0.0%	0	0.0%	0	0.0%	0	0.0%
<b>Facility Type</b>										
Correctional Institutions	0	0.0%	0	0.0%	0	0.0%	1	2.4%	1	0.8%
Work Camps/Road Prisons	0	0.0%	1	3.7%	0	0.0%	0	0.0%	1	0.8%
Work Release/Contract Centers	24	100.0%	26	96.3%	29	100.0%	41	97.6%	120	98.4%
<b>Facility Type by Region</b>										
<b>Correctional Institutions</b>	<b>0</b>	<b>0.0%</b>	<b>0</b>	<b>0.0%</b>	<b>0</b>	<b>0.0%</b>	<b>1</b>	<b>2.4%</b>	<b>1</b>	<b>0.8%</b>
Region I	0	0.0%	0	0.0%	0	0.0%	0	0.0%	0	0.0%
Region II	0	0.0%	0	0.0%	0	0.0%	1	100.0%	1	100.0%
Region III	0	0.0%	0	0.0%	0	0.0%	0	0.0%	0	0.0%
Region IV	0	0.0%	0	0.0%	0	0.0%	0	0.0%	0	0.0%
<b>Work Camps/Road Prisons</b>	<b>0</b>	<b>0.0%</b>	<b>1</b>	<b>3.7%</b>	<b>0</b>	<b>0.0%</b>	<b>0</b>	<b>0.0%</b>	<b>1</b>	<b>0.8%</b>
Region I	0	0.0%	0	0.0%	0	0.0%	0	0.0%	0	0.0%
Region II	0	0.0%	0	0.0%	0	0.0%	0	0.0%	0	0.0%
Region III	0	0.0%	1	100.0%	0	0.0%	0	0.0%	1	100.0%
Region IV	0	0.0%	0	0.0%	0	0.0%	0	0.0%	0	0.0%
<b>Work Release/Contract Centers</b>	<b>24</b>	<b>100.0%</b>	<b>26</b>	<b>96.3%</b>	<b>29</b>	<b>100.0%</b>	<b>41</b>	<b>97.6%</b>	<b>120</b>	<b>98.4%</b>
Region I	5	20.8%	5	19.2%	5	17.2%	1	2.4%	16	13.3%
Region II	2	8.3%	5	19.2%	3	10.3%	6	14.6%	16	13.3%
Region III	7	29.2%	5	19.2%	8	27.6%	10	24.4%	30	25.0%
Region IV	10	41.7%	11	42.3%	13	44.8%	24	58.5%	58	48.3%

\*Numbers may differ from previous reports as facilities may change types across time and the number and level of escape may be updated upon receipt of further information.

## Recaptures (July 2005- June 2006)

Recaptures**	1st Quarter (Jul-Sep 2005)		2nd Quarter (Oct-Dec 2005)		3rd Quarter (Jan-Mar 2006)		4th Quarter (Apr-Jun 2006)		Fiscal Year 2005/2006	
<b>Escapes</b>	24		27		29		42		122	
Recaptured	24	100.0%	26	96.3%	27	93.1%	35	83.3%	112	91.8%
Not Recaptured	0	0.0%	1	3.7%	2	6.9%	7	16.7%	10	8.2%
<b>Recaptured Within Quarter</b>	<b>19</b>	<b>79.2%</b>	<b>22</b>	<b>84.6%</b>	<b>25</b>	<b>92.6%</b>	<b>32</b>	<b>91.4%</b>	<b>98</b>	<b>87.5%</b>
<b>Time to Recapture</b>										
Less Than or Equal To 24 Hours	11	57.9%	12	54.5%	20	80.0%	18	56.3%	61	62.2%
Greater Than 24 Hours Within Quarter	8	42.1%	10	45.5%	5	20.0%	14	43.8%	37	37.8%
<b>Recaptures by Facility Type</b>										
<b>Correctional Institutions</b>	<b>0</b>	<b>0.0%</b>	<b>0</b>	<b>0.0%</b>	<b>0</b>	<b>0.0%</b>	<b>1</b>	<b>3.1%</b>	<b>1</b>	<b>1.0%</b>
Less Than or Equal To 24 Hours	0	0.0%	0	0.0%	0	0.0%	0	0.0%	0	0.0%
Greater Than 24 Hours	0	0.0%	0	0.0%	0	0.0%	1	0.0%	1	0.0%
<b>Work Camps/Road Prisons</b>	<b>0</b>	<b>0.0%</b>	<b>1</b>	<b>4.5%</b>	<b>0</b>	<b>0.0%</b>	<b>0</b>	<b>0.0%</b>	<b>1</b>	<b>1.0%</b>
Less Than or Equal To 24 Hours	0	0.0%	1	100.0%	0	0.0%	0	0.0%	1	0.0%
Greater Than 24 Hours	0	0.0%	0	0.0%	0	0.0%	0	0.0%	0	0.0%
<b>Work Release/Contract Centers</b>	<b>19</b>	<b>100.0%</b>	<b>21</b>	<b>95.5%</b>	<b>25</b>	<b>100.0%</b>	<b>31</b>	<b>96.9%</b>	<b>96</b>	<b>98.0%</b>
Less Than or Equal To 24 Hours	12	63.2%	11	52.4%	20	80.0%	17	54.8%	60	62.5%
Greater Than 24 Hours	7	36.8%	10	47.6%	5	20.0%	14	45.2%	36	37.5%

\*\*The Recaptured/ Not Recaptured categories may change over time as past escapes are recaptured.

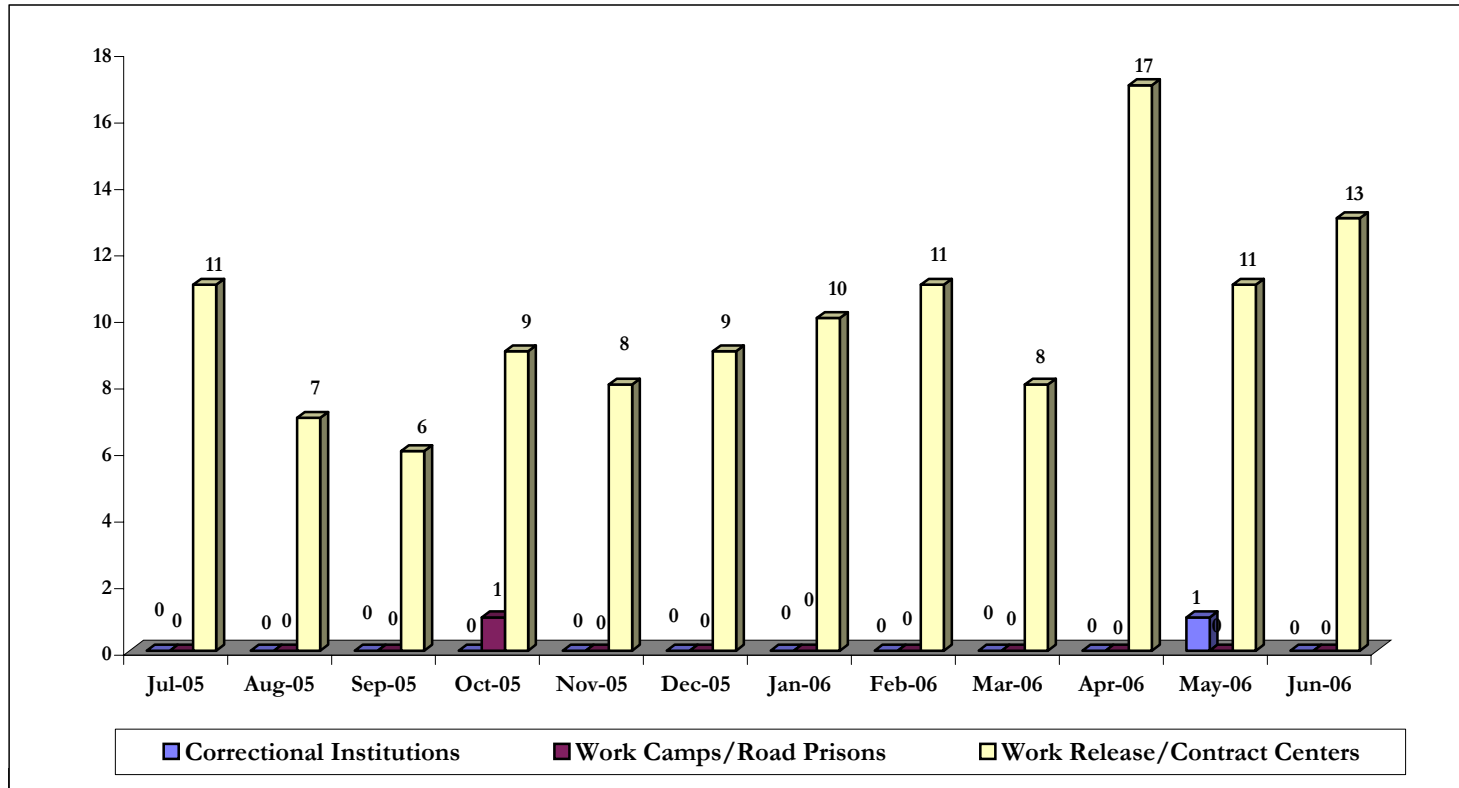
Breakdown of recaptured information is based on those escapes recaptured within the quarter in which the escape occurred.

## Escape Rates (July 2005 - June 2006)

Escape Rate by Region*	1st Quarter (Jul-Sep 2005)	2nd Quarter (Oct-Dec 2005)	3rd Quarter (Jan-Mar 2006)	4th Quarter (Apr-Jun 2006)	Fiscal Year 2005/2006
Escapes	24	27	29	42	122
Escape Rate	0.28	0.31	0.33	0.48	1.41
<b>Region</b>					
Region I	0.21	0.20	0.20	0.04	0.64
Region II	0.08	0.20	0.12	0.28	0.68
Region III	0.42	0.36	0.48	0.60	1.86
Region IV	0.50	0.56	0.65	1.18	2.89
<b>Facility Type by Region</b>					
<b>Correctional Institutions</b>	<b>0.00</b>	<b>0.00</b>	<b>0.00</b>	<b>0.01</b>	<b>0.01</b>
Region I	0.00	0.00	0.00	0.00	0.00
Region II	0.00	0.00	0.00	0.05	0.05
Region III	0.00	0.00	0.00	0.00	0.00
Region IV	0.00	0.00	0.00	0.00	0.00
<b>Work Camps/Road Prisons</b>	<b>0.00</b>	<b>0.10</b>	<b>0.00</b>	<b>0.00</b>	<b>0.10</b>
Region I	0.00	0.00	0.00	0.00	0.00
Region II	0.00	0.00	0.00	0.00	0.00
Region III	0.00	0.46	0.00	0.00	0.46
Region IV	0.00	0.00	0.00	0.00	0.00
<b>Work Release/Contract Centers</b>	<b>8.68</b>	<b>10.15</b>	<b>9.67</b>	<b>13.84</b>	<b>42.52</b>
Region I	16.84	16.89	16.84	3.37	53.92
Region II	4.99	12.76	5.94	12.07	35.65
Region III	7.14	4.97	7.70	9.74	29.61
Region IV	9.21	12.67	11.25	21.02	54.56

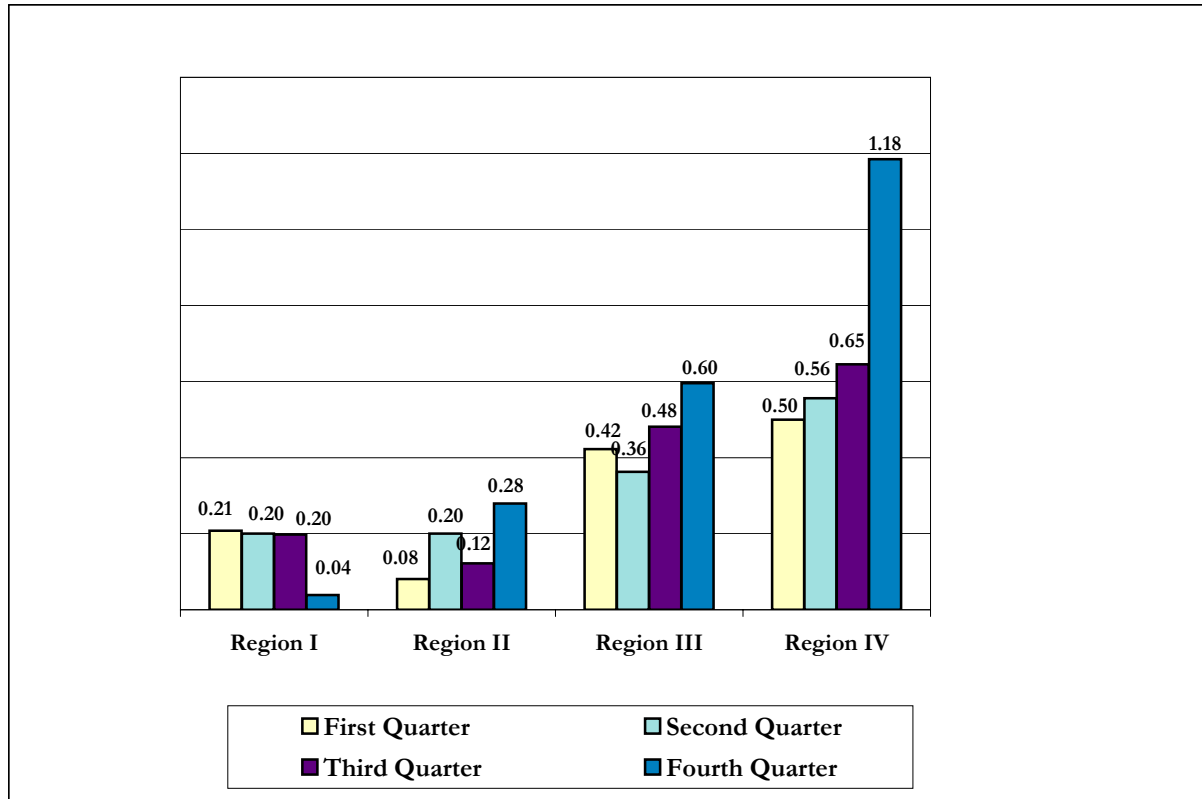
\*Escape rate defined as the number of escapes/(total population on the last day of the month for each month in the quarter/3)\*1,000.

# Escapes by Facility Type, by Month (July 2005 - June 2006)



# Escape Rate by Region, by Quarter

(July 2005 - June 2006)





# Escapes by Region/Facility

## (July 2005 - June 2006)

### *Region 1*

Region/Institution	1st Quarter (Jul-Sep 2005)	2nd Quarter (Oct-Dec 2005)	3rd Quarter (Jan-Mar 2006)	4th Quarter (Apr-Jun 2006)	Fiscal Year 2005/2006
<b>Total Escapes</b>	24	27	29	42	122
<b>Region 1</b>	5	5	5	1	16
<b>Correctional Institutions</b>	0	0	0	0	0
101-Apalachee West CI					
102-Apalachee East CI					
103-Jefferson CI					
104-Jackson CI					
105-Calhon CI					
106-Century CI					
107-Holmes CI					
108-Walton CI					
109-Gulf CI					
110-Washington CI					
111-Gadsden CI (Private)					
112-Bay CF (Private)					
115-Okaloosa CI					
118-Wakulla CI					
119-Santa Rosa CI					
120-Liberty CI					
139-Quincy CI					
150-Gulf CI West Unit					
<b>Work Camps/Road Prisons</b>	0	0	0	0	0
114-River Junction Work Camp					
121-Liberty Work Camp					
134-Tallahassee Road Prison					
136-Caryville Work Camp					
160-Graceville Work Camp					
161-Okaloosa Work Camp					
162-Holmes Work Camp					
165-Calhoun Work Camp					
166-Jackson Work Camp					
167-Century Work Camp					
170-Gulf Forestry Camp					
171-Franklin Work Camp					
172-Walton Work Camp					
177-Berrydale Forestry Camp					
<b>Work Release/Contract Centers</b>	5	5	5	1	16
156-Marianna WRC					
163-Panama City WRC		1			1
164-Pensacola WRC	1		1		2
168-Tallahassee WRC	4	3	4		11
173-Wakulla WRC					
187-Shisa House West		1		1	2

# Escapes by Region/Facility

## (July 2005 - June 2006)

### *Region 2*

Region/Institution	1st Quarter (Jul-Sep 2005)	2nd Quarter (Oct-Dec 2005)	3rd Quarter (Jan-Mar 2006)	4th Quarter (Apr-Jun 2006)	Fiscal Year 2005/2006
<b>Total Escapes</b>	24	27	29	42	122
<b>Region 2</b>	2	5	3	7	17
<b>Correctional Institutions</b>	0	0	0	1	1
201-Columbia CI					
205-Florida State Prison Main Unit					
206-New River CI West					
208-RMC West Unit					
209-RMC Main Unit					
210-New River CI East					
211-Cross City CI					
212-Mayo CI					
213-Union CI					
214-Putnam CI					
215-Hamilton CI					
216-Madison CI					
218-Taylor CI					
219-Lake City CF (Private)					
224-Taylor Annex					
250-Hamilton CI Annex					
255-Lawtey CI				1	1
277-Gainesville CI					
279-Baker CI					
281-Lancaster CI					
<b>Work Camps/Road Prisons</b>	0	0	0	0	0
204-Florida State Prison Work Camp					
240-Gainesville Work Camp					
261-Baker Work Camp					
262-Cross City Work Camp					
263-Hamilton Work Camp					
264-Columbia Work Camp					
265-Mayo Work Camp					
280-Lancaster Work Camp					
289-Madison Work Camp					
<b>Work Release/Contract Centers</b>	2	5	3	6	16
242-Daytona WRC					
243-Dinsmore WRC	1			1	2
249-Lake City WRC			1		1
266-Sante Fe WRC	1			2	3
267-Bridges of Jacksonville		4	2	3	9
278-Shisa House East		1			1

# Escapes by Region/Facility

## (July 2005 - June 2006)

### *Region 3*

Region/Institution	1st Quarter (Jul-Sep 2005)	2nd Quarter (Oct-Dec 2005)	3rd Quarter (Jan-Mar 2006)	4th Quarter (Apr-Jun 2006)	Fiscal Year 2005/2006
<b>Total Escapes</b>	24	27	29	42	122
<b>Region 3</b>	7	6	8	10	31
<b>Correctional Institutions</b>	0	0	0	0	0
282-Tomoka CI					
304-Marion CI					
307-Sumter CI					
308-Sumter BTU Boot Camp					
310-Brevard CI					
312-Lake CI					
314-Lowell CI Women's Unit					
320-Central Florida Reception Center Main					
321-Central Florida Reception Center East					
323-Central Florida Reception Center South					
336-Hernando CI					
366-Lowell CI Boot Camp					
367- Lowell Annex					
503-Avon Park CI					
529-Hillsborough CI					
573-Zephyrhills CI					
580-Polk CI					
<b>Work Camps/Road Prisons</b>	0	1	0	0	1
284-Tomoka Work Camp		1			1
287-Levy Forestry Camp					
363-Brevard Work Camp					
364-Marion Work Camp					
365-Sumter Work Camp					
504-Avon Park Work Camp					
552-Largo Work Camp					
562-Polk Work Camp					
<b>Work Release/Contract Centers</b>	7	5	8	10	30
242-Daytona WRC				1	1
285-Reality House					
341-Cocoa WRC					
345-Suncoast WRC					
351-Bridges of Orlando			2		2
355-Reentry Center of Ocala WRC	2	1	3	4	10
361-Orlando WRC					
374-Kissimmee WRC	1	2	3		6
540-Bartow WRC	1	1		2	4
554-Pinellas WRC					
572-Tarpon Springs WRC					
583-St. Petersburg WRC	3	1		3	7

# Escapes by Region/Facility

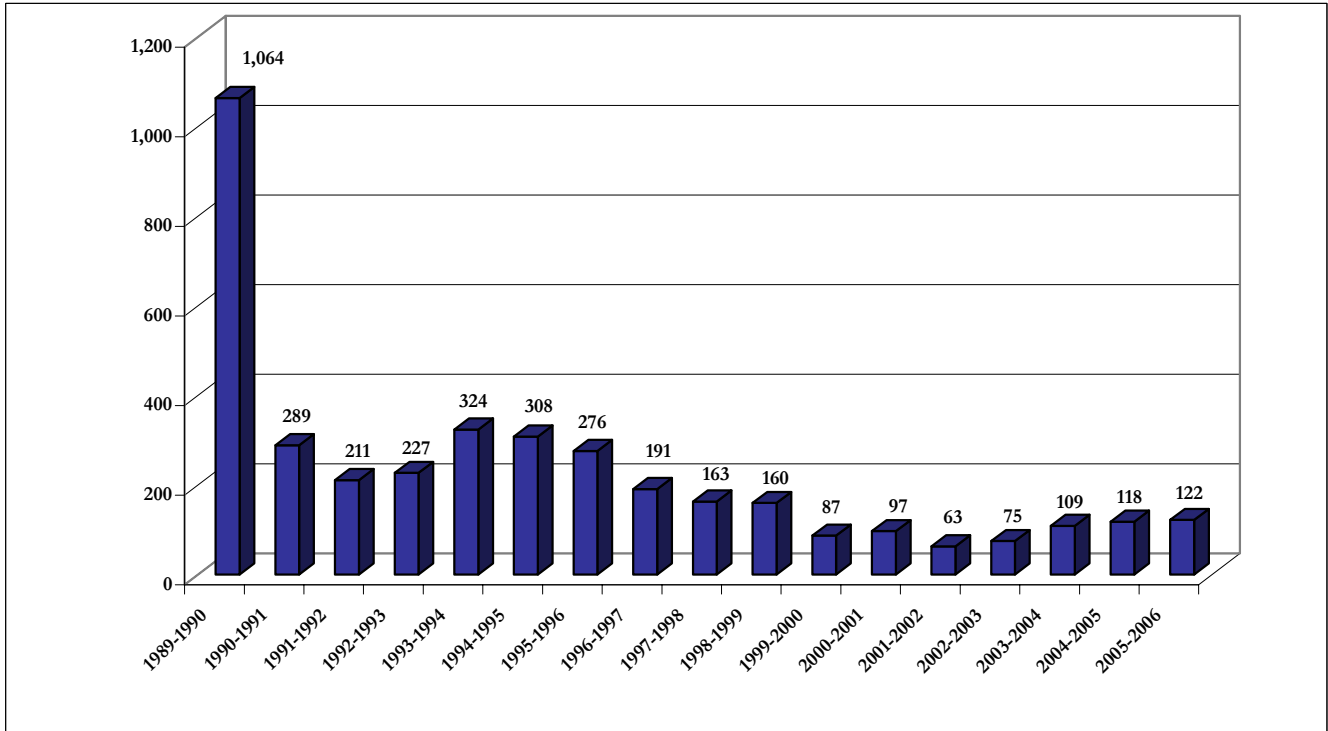
## (July 2005 - June 2006)

### *Region 4*

Region/Institution	1st Quarter (Jul-Sep 2005)	2nd Quarter (Oct-Dec 2005)	3rd Quarter (Jan-Mar 2006)	4th Quarter (Apr-Jun 2006)	Fiscal Year 2005/2006
<b>Total Escapes</b>	24	27	29	42	122
<b>Region 4</b>	10	11	13	24	58
<b>Correctional Institutions</b>	0	0	0	0	0
401-Everglades CI					
402-South Florida Reception Center Main					
403- SFRC South Unit					
404-Okeechobee CI					
405-South Bay CF (Private)					
406-Glades CI					
418-Indian River CI					
419-Dade CI					
430-Martin CI					
463-Dade Annex					
475-Broward CI					
501-Hardee CI					
510-Charlotte CI					
511-Moore Haven CF (Private)					
564-DeSoto CI Annex					
576-Hendry CI					
<b>Work Camps/Road Prisons</b>	0	0	0	0	0
420-Martin Work Camp					
426-Big Pine Key Road Prison					
431-Loxahatchee Road Prison					
462-Glades Work Camp					
525-Arcadia Road Prison					
544-Ft. Meyers Work Camp					
560-DeSoto Work Camp					
561-Hendry Work Camp					
563-Hardee Work Camp					
<b>Work Release/Contract Centers</b>	10	11	13	24	58
411-Pompano Transition Cente	2	5	1	2	10
444-Ft. Pierce WRC	1			2	3
446-Hollywood WRC					
452-Atlantic WRC	1	1	1		3
457-Miami North WRC	2				2
465-Pompano Beach WRC					
467-Bridges of Pompano WRC	3	2	6	9	20
469-West Palm WRC		2	4	3	9
473-Opa Locka WRC	1	1	1	8	11
481- Martin Unit TC					
578-Bradenton WRC					

# Total Escapes

(FY 1989-1990 to FY 2005-2006)



**Historical Escape Rates (All Facilities)**  
(FY 1989-1990 to FY 2005-2006)

<b>Fiscal Year</b>	<b>Number of Escapes</b>	<b>Average Inmate Population*</b>	<b>Escapes Per 1,000 Inmates</b>
1989-1990	1,064	40,396	26.34
1990-1991	289	44,483	6.50
1991-1992	211	46,622	4.53
1992-1993	227	48,808	4.65
1993-1994	324	53,594	6.05
1994-1995	308	59,022	5.22
1995-1996	276	63,163	4.37
1996-1997	191	64,242	2.97
1997-1998	163	65,234	2.50
1998-1999	160	67,227	2.38
1999-2000	87	69,782	1.25
2000-2001	97	71,476	1.36
2001-2002	63	72,485	0.87
2002-2003	75	75,162	1.00
2003-2004	109	79,616	1.37
2004-2005	118	83,140	1.42
2005-2006	122	86,570	1.41

\*Inmate population average based on (four quarters population on last day of each month)/4.

**Escape Rates for Correctional Institutions**  
(FY 1993-1994 to FY 2005-2006)

<b>Fiscal Year</b>	<b>Number of Escapes</b>	<b>Average Inmate Population*</b>	<b>Escapes Per 1,000 Inmates</b>
1993-1994	56	42,355	1.30
1994-1995	37	47,266	0.78
1995-1996	13	50,006	0.26
1996-1997	9	53,670	0.19
1997-1998	8	54,573	0.15
1998-1999	4	56,135	0.07
1999-2000	9	58,607	0.15
2000-2001	4	60,268	0.07
2001-2002	2	60,813	0.03
2002-2003	1	62,957	0.02
2003-2004	3	67,018	0.04
2004-2005	8	70,546	0.11
2005-2006	1	73,240	0.01

\*Inmate population average based on (four quarters population on last day of each month)/4.

The Florida Department of Corrections  
Bureau of Research and Data Analysis  
Direct questions to David Ensley or Todd Gregory  
or email us at: [dcresearch@mail.dc.state.fl.us](mailto:dcresearch@mail.dc.state.fl.us)  
(850) 488-1801 SC 278-1801  
2601 Blair Stone Road  
Tallahassee, Florida 32399-2500